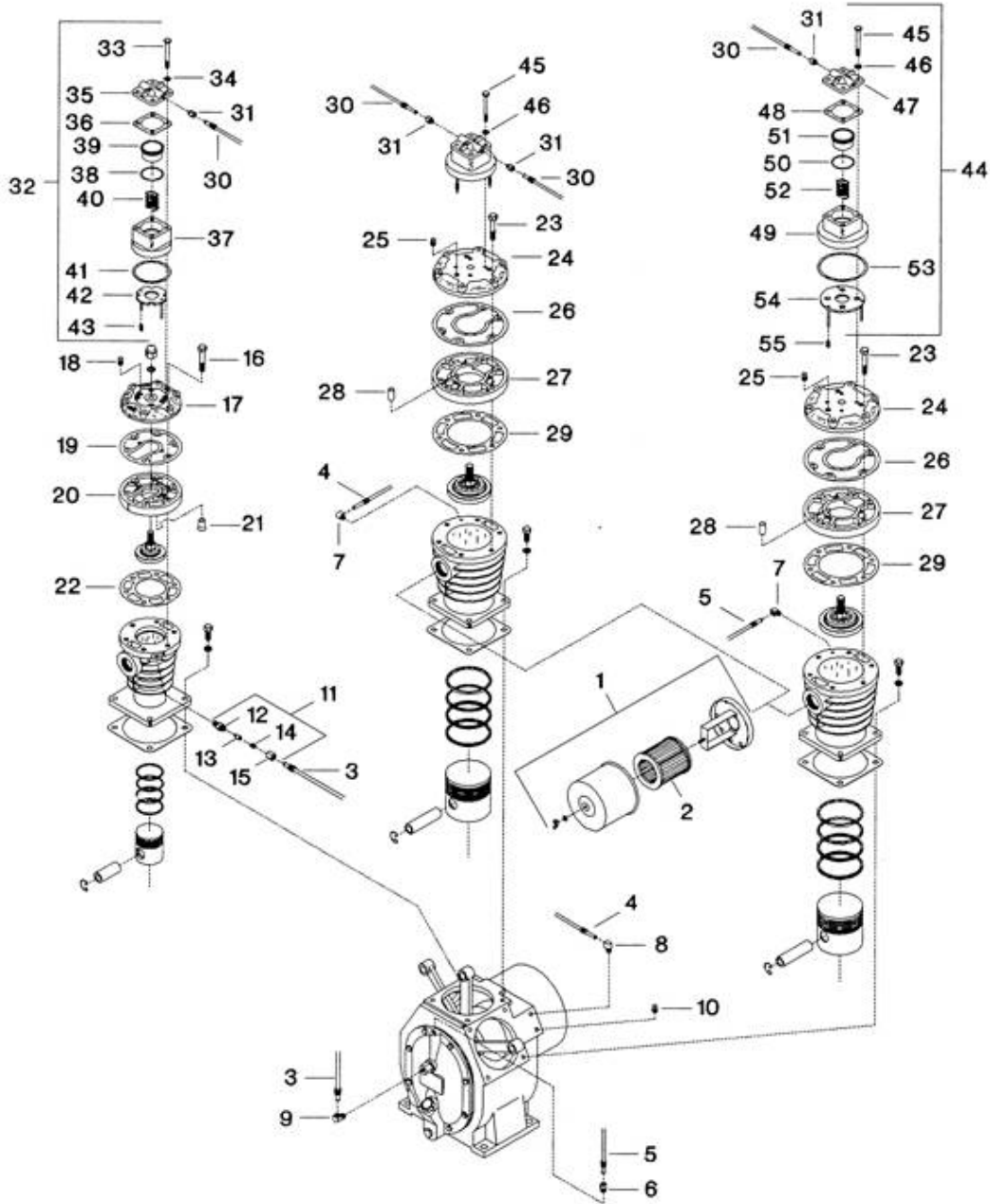


3. Bare Compressor - Model 15T



All manufacturer's names, numbers, photos, product description and/or part numbers are used for reference purposes only & it is not implied that any part listed is the product of these manufacturers. Since Approvement are made from time to time, the illustration and specifications are subject to change without notice.

3. Bare Compressor - Model 15T

REF. NBR.	PART NUMBER	DESCRIPTION	UNITS PER ASSY.	REC. SPARES		
				1	2	3
3-1	32109779	FILTER COMPLETE - INLET	2			
3-2	32012957	●ELEMENT, FILTER - 10 MICRON	1	2	2	2
3-3	37003845	TUBE ASSEMBLY, CYLINDER RELIEF/PILOT VALVE - 3/8 DIA.	1			
3-4	37003829	TUBE ASSEMBLY, BREATHER - 5/16 DIA.	1			
3-5	37003837	TUBE ASSEMBLY, FRAME END COVER/L.P. CYLINDER - 5/16 DIA.	1			
3-6	32157554	CONNECTOR, MALE - 5/16 x 1/4	1			
3-7	95031860	ELBOW, TUBE - 5/16 x 1/8	2			
3-8	95110441	ELBOW, TUBE - 5/16 x 1/4	1			
3-9	95040143	ELBOW, TUBE - 3/8 x 1/4	1			
3-10	95252409	PLUG, PIPE - HEX 1/4	1			
3-11	30291801	ASSEMBLY, CYLINDER RELIEF VALVE	1			1
3-12	35154111	●BODY, CYLINDER RELIEF VALVE	1			
3-13	35154129	●VALVE, CYLINDER RELIEF BARE	1			
3-14	30672638	●SPRING, CYLINDER RELIEF VALVE	1	1	1	2
3-15	30279293	●CAP, CYLINDER RELIEF VALVE	1			
3-16	95053054	CAPSCREW - HEX 1/2-13 x 3	6			
3-17	37130382	AIRHEAD, TOP - HIGH PRESSURE	1			
3-18	32179038	●PLUG, PIPE - HEX HEAD 1/4	2			
3-19	37007754	GASKET, AIRHEAD - TOP/BOTTOM - HIGH PRESSURE	1	1	1	2
3-20	37130366	AIRHEAD, BOTTOM HALF - HIGH PRESSURE	1			
3-21	37114030	DOWEL	1			
3-22	30294508	GASKET, AIRHEAD - HIGH PRESSURE	1	1	1	2
3-23	95053054	CAPSCREW - HEX 1/2-13 x 3	6			
3-24	37130515	AIRHEAD, TOP - LOW PRESSURE	2			
3-25	32179038	●PLUG, PIPE - HEX HEAD 1/4	6			
3-26	37007747	GASKET, AIRHEAD - TOP/BOTTOM - LOW PRESSURE	2	2	2	4
3-27	37130499	AIRHEAD, BOTTOM HALF - LOW PRESSURE	2			
3-28	37114030	DOWEL	2			
3-29	30294193	GASKET, AIRHEAD - LOW PRESSURE	2	2	2	4
<p>NOTE: PARTS LISTED BELOW USED WITH OPTIONAL CONSTANT SPEED CONTROL</p>						
3-30	37003852	ASSEMBLY, TUBE - L.P./L.P./H.P. CONSTANT SPEED - 5/16 DIA.	2			
3-31	95082483	CONNECTOR, TUBE - 5/16 x 1/8	4			
3-32	30292015	UNLOADER - COMPLETE - HIGH PRESSURE	1			
3-33	95102042	●CAPSCREW - HEX 3/8-16 x 3-1/2	4			
3-34	30345227	●WASHER, FLAT - 3/8	4			
3-35	37129905	●COVER, UNLOADER	1			
3-36	30294656	●GASKET, UNLOADER COVER	1	1	1	2
3-37	37129889	●BODY, UNLOADER	1			
3-38	32136715	●O-RING	1	1	1	1
3-39	32139863	●PISTON, UNLOADER	1			
3-40	30416853	●SPRING, UNLOADER PISTON	1			1
3-41	30294680	●GASKET, UNLOADER BODY	1	1	1	2
3-42	32016578	●ASSEMBLY, UNLOADER PLATE	1			
3-43	32012395	●SPRING, UNLOADER PIN	2			
3-44	30292007	UNLOADER - COMPLETE - LOW PRESSURE	2			
3-45	95102042	●CAPSCREW - HEX 3/8-16 x 3-1/2	4			
3-46	30345227	●WASHER, FLAT - 3/8	4			
3-47	37129905	●COVER, UNLOADER	1			
3-48	30294656	●GASKET, UNLOADER COVER	1	1	1	2
3-49	37129947	●BODY, UNLOADER	1			
3-50	32136715	●O-RING	1	1	1	2
3-51	32139863	●PISTON, UNLOADER	1			
3-52	30416853	●SPRING, UNLOADER PISTON	1			2
3-53	30294698	●GASKET, UNLOADER BODY	1	1	1	2
3-54	32016537	●ASSEMBLY, UNLOADER PLATE	1			
3-55	32012395	●SPRING, UNLOADER PIN	3			3
<p>IF FILTER REPLACEMENT IS DESIRED, WE RECOMMEND AN ECONOMICAL FILTER KIT. SEE PAGE 10.</p>						

All manufacturer's names, numbers, photos, product description and/or part numbers are used for reference purposes only & it is not implied that any part listed is the product of these manufacturers. Since Approvement are made from time to time, the illustration and specifications are subject to change without notice.