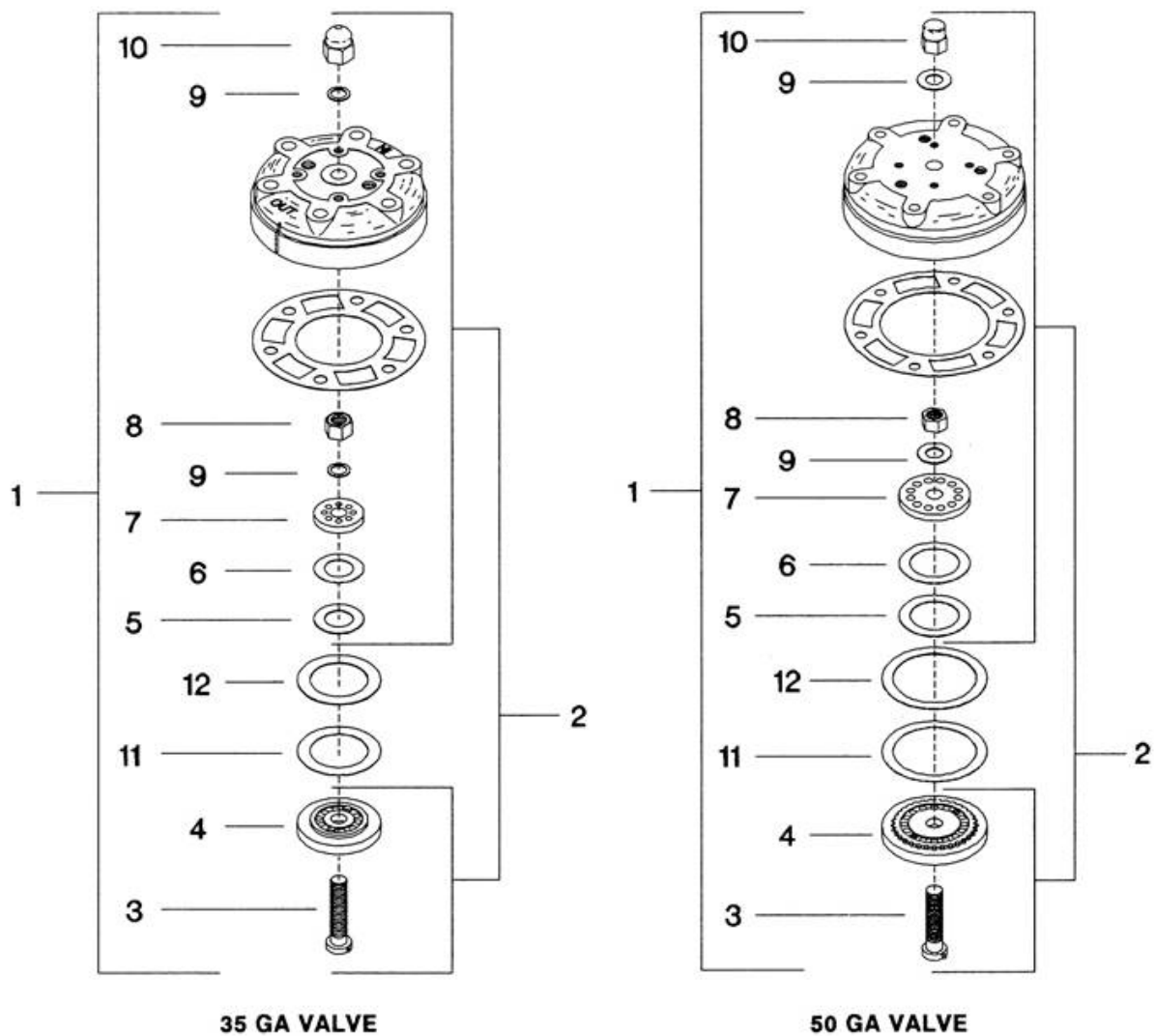


# 1. Valve Assemblies - Bare Compressor - Model 15T



All manufacturer's names, numbers, photos, product description and/or part numbers are used for reference purposes only & it is not implied that any part listed is the product of these manufacturers. Since Approvement are made from time to time, the illustration and specifications are subject to change without notice.

# 1. Valve Assemblies - Bare Compressor - Model 15T



REF. NBR.	35 GA VALVE PART NUMBER	50 GA VALVE PART NUMBER	DESCRIPTION	UNITS PER. ASSY.	REC. SPARES		
					1	2	3
1-1	37004827	--	VALVE - COMPLETE - 35 GA	1		1	1
1-1	--	37004843	VALVE - COMPLETE - 50 GA	2		2	2
1-2	32156713	32156739	● ASSEMBLY, VALVE	1			
1-3	30220925	30279897	● ● BOLT, VALVE	1			
1-4	30217608	30229538	● ● SEAT, VALVE - DISCHARGE	1			
1-5	30215941	30181499	● ● PLATE, VALVE - DISCHARGE	1	1	1	1
1-6	30221576	30221501	● ● SPRING, VALVE - DISCHARGE	1	1	1	1
1-7	30218994	30218978	● ● PLATE, STOP - DISCHARGE	1			
1-8	95076808	95076816	● ● NUT, HEX	i			
1-9	32158644	37092897	● ● WASHER, BELLEVILLE	2			2
1-10	30287643	30287650	● ● NUT, ACORN	1			
1-11	30221501	30221550	● SPRING, VALVE - INLET	1	1	1	1
1-12	30181499	30215891	● PLATE, VALVE - INLET	1	1	1	1
IF VALVE REPLACEMENT IS DESIRED, WE RECOMMEND AN ECONOMICAL VALVE/GASKET KIT. SEE PAGE 10.							

All manufacturer's names, numbers, photos, product description and/or part numbers are used for reference purposes only & it is not implied that any part listed is the product of these manufacturers. Since Approval are made from time to time, the illustration and specifications are subject to change without notice.