

## 6. First Stage (5") Piston, Cylinder & Crosshead

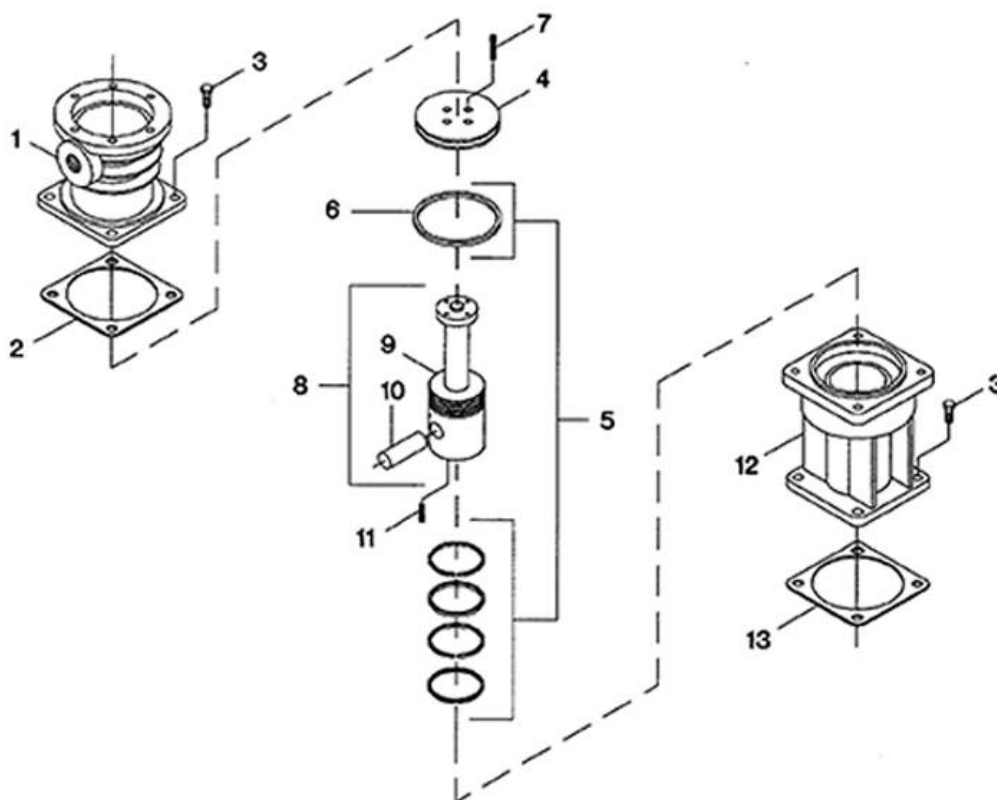


FIGURE 6. FIRST STAGE (5") PISTON, CYLINDER & CROSSHEAD.

## 6. First Stage (5") Piston, Cylinder & Crosshead

<b>Figure 6. First Stage (5") Piston, Cylinder &amp; Crosshead.</b>			
<b>Ref. No.</b>	<b>Part No.</b>	<b>Description</b>	<b>Units Per Assy.</b>
6-1	32222416	Cylinder, Air - 5' - High Pressure	1
6-2	37135985	Gasket, Flange	1
6-3	32225195	Capscrew - M12 X 30	8
6-4	37140043	Top, Piston	1
6-5	32015109	Set, Ring	1
6-6	37197993	• Ring, Piston - Step Seal	1
6-7	32225153	Screw, Socket Head - M6 X 16	4
6-8	32222796	Assembly, Crosshead/Pin	1
6-9	NSS	• Crosshead	1
6-10	37170271	• Pin, Crosshead	1
6-11	32225211	Setscrew - M10 X 25	1
6-12	32222325	Guide, Crosshead	1
6-13	30294201	Gasket, Flange	1

All manufacturer's names, numbers, photos, product description and/or part numbers are used for reference purposes only & it is not implied that any part listed is the product of these manufacturers. Since Approvement are made from time to time, the illustration and specifications are subject to change without notice.