

4.Low Pressure Concentric Ring Valve - Model 5T2NL

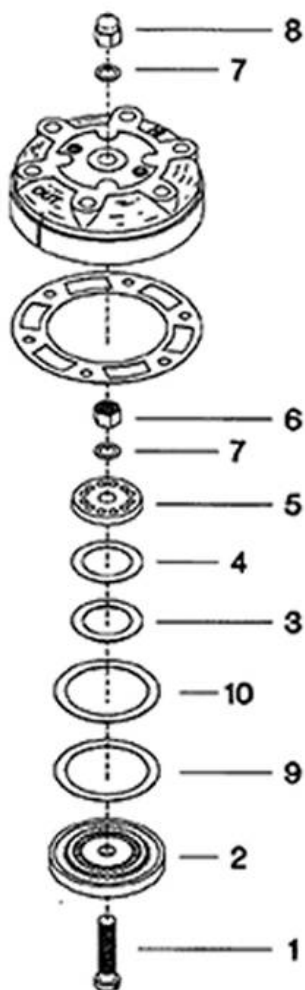


FIGURE 4. LOW PRESSURE CONCENTRIC RING VALVE.

4.Low Pressure Concentric Ring Valve - Model 5T2NL

Figure 4. Low Pressure Concentric Ring Valve.			
Ref. No.	Part No.	Description	Units Per Assy.
REF.	37004843	Valve, 50 - Complete	1
4-1	30279897	• Bolt, Valve	1
4-2	30229538	• Seat, Valve	1
4-3	30181499	• Plate, Valve - Discharge/Inlet	1
4-4	30221501	• Spring, Valve - Discharge/Inlet	1
4-5	30218978	• Plate, Stop	1
4-6	95076816	• Nut, Hex	1
4-7	37092897	• Washer, Belleville	2
4-8	30287650	• Nut, Acorn	1
4-9	30221550	• Spring, Valve - Inlet	1
4-10	30215891	• Plate, Valve - Inlet	1

All manufacturer's names, numbers, photos, product description and/or part numbers are used for reference purposes only & it is not implied that any part listed is the product of these manufacturers. Since improvement are made from time to time, the illustration and specifications are subject to change without notice.