

### 3.High Pressure Concentric Ring Valve - Model 5T2NL

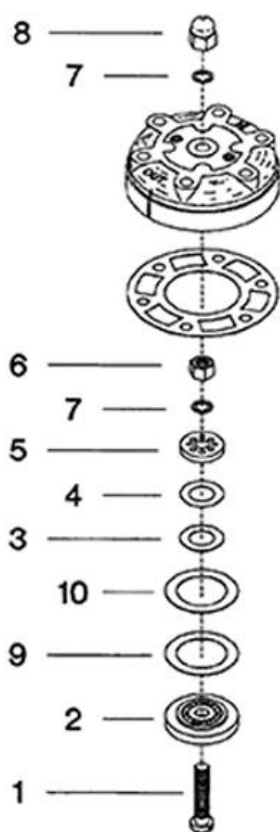


FIGURE 3. HIGH PRESSURE CONCENTRIC RING VALVE.

### 3.High Pressure Concentric Ring Valve - Model 5T2NL

<b>Figure 3. High Pressure Concentric Ring Valve.</b>			
<b>Ref. No.</b>	<b>Part No.</b>	<b>Description</b>	<b>Units Per Assy.</b>
REF.	37004827	Valve, 35 - Complete	1
3-1	30220925	• Bolt, Valve	1
3-2	30217608	• Seat, Valve	1
3-3	30215941	• Plate, Valve - Discharge	1
3-4	30221576	• Spring, Valve - Discharge	1
3-5	30218994	• Plate, Valve	1
3-6	95076808	• Nut, Hex	1
3-7	37092913	• Washer, Belleville	2
3-8	30287643	• Nut, Acorn	1
3-9	30221501	• Spring, Valve - Discharge/Inlet	1
3-10	30181499	• Plate, Valve - Discharge/Inlet	1

All manufacturer's names, numbers, photos, product description and/or part numbers are used for reference purposes only & it is not implied that any part listed is the product of these manufacturers. Since Approvement are made from time to time, the illustration and specifications are subject to change without notice.