

2. Bare Compressor - Model 5T2NL

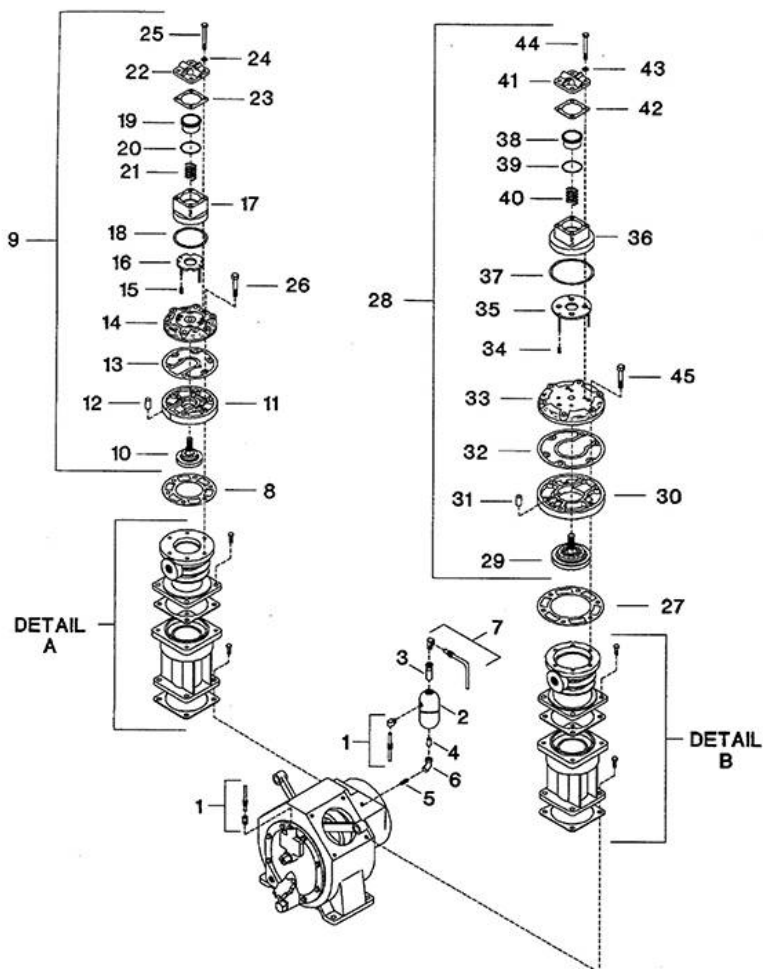


FIGURE 2. BARE COMPRESSOR.

2. Bare Compressor - Model 5T2NL

Figure 2. Bare Compressor.			
Ref. No.	Part No.	Description	Units Per Assy.
2-1	32241523	Assembly, Tube - Pilot Valve/Breather - Complete1.	1
2-2	32225534	Bottle, Breather Trap	1
2-3	32225526	Plug, Breather Element	1
2-4	32230864	Nipple, Hex - 3/8"	1
2-5	95691077	Nipple, Close - 3/8 X 1'	1
2-6	95030672	Elbow, Pipe - 3/8' - 45°	1
2-7	32241549	Assembly, Tube - Breather Trap - Completet	1
2-8	30294508	Gasket, Airhead - High Pressure	1
2-9	32226318	Assembly, Airhead/Valve - High Pressure	1
2-10	37004827	• Valve, 35 - Complete (See Figure 3, Page 8)	1
2-11	32222705	• Airhead, Bottom	1
2-12	37114030	• Dowel	1
2-13	37007754	• Gasket, Airhead - Top/Bottom	1
2-14	32226177	• Airhead, Top	1
2-15	32012395	• Spring, Unloader Pin	2
2-16	32016578	• Plate, Unloader - Complete	1
2-17	37129889	• Body, Unloader	1
2-18	30294680	• Gasket, Unloader Body	1
2-19	32222507	• Piston, Unloader	1
2-20	32225468	0-Ring, Unloader Piston	1
2-21	30416853	• Spring, Unloader Piston	1
2-22	37129905	• Cover, Unloader	1
2-23	30294656	• Gasket, Unloader Cover	1
2-24	32225286	• Washer - M10	4
2-25	32225138	• Capscrew - M10 X 85	4
2-26	32225146	Capscrew - M12 X 75	6
2-27	30294193	Gasket, Airhead - Low Pressure	1
2-28	32226300	Assembly, Airhead/Valve - Low Pressure	1
2-29	37004843	• Valve, 50 - Complete (See Figure 4, Page 9)	1
2-30	32222739	• Airhead, Bottom	1
2-31	37114030	• Dowel	1
2-32	37007747	• Gasket, Airhead - Top/Bottom	1
2-33	32226185	• Airhead, Top	1
2-34	32012395	• Spring, Unloader Pin	3
2-35	32222788	• Plate, Unloader - Complete	1
2-36	37129947	• Body, Unloader	1
2-37	30294698	• Gasket, Unloader Body	1
2-38	32222507	• Piston, Unloader	1
2-39	32225468	0-Ring, Unloader Piston	1
2-40	30416853	• Spring, Unloader Piston	1
2-41	37129905	• Cover, Unloader	1
2-42	30294656	• Gasket, Unloader Cover	1
2-43	32225286	• Washer - M10	4
2-44	32225138	• Capscrew - M10 X 90	4
2-45	32225146	Capscrew - M12 X 75	6

All manufacturer's names, numbers, photos, product description and/or part numbers are used for reference purposes only & it is not implied that any part listed is the product of these manufacturers. Since Approval are made from time to time, the illustration and specifications are subject to change without notice.