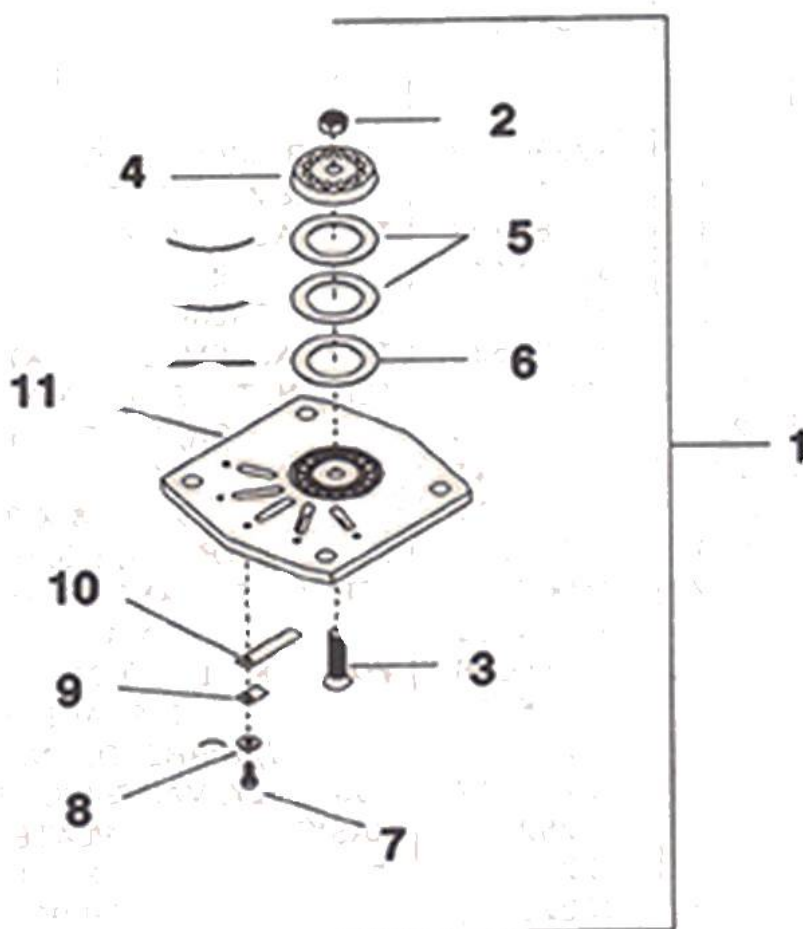


4. Low Pressure Valve Assembly - Model 2540



All manufacturer's names, numbers, photos, product description and/or part numbers are used for reference purposes only & it is not implied that any part listed is the product of these manufacturers. Since Approvement are made from time to time, the illustration and specifications are subject to change without notice.

4. Low Pressure Valve Assembly - Model 2540

Figure 4 Low Pressure Valve Assembly			
Ref. No.	Part No.	Description	Units Per Assy.
	Figure 4. Low Pressure Valve Assembly		
4-1	Assembly, Valve - Low Pressure	32228389	1
4-2	•Nut, Whiz-Lock - 7/16-14 Hex	97166946	1
4-3	•Bolt, Discharge Valve	32223927	1
4-4	•Plate, Stop	32228264	1
4-5	•Spring, Discharge Valve	30221394	2
4-6	•Plate, Discharge Valve	30215917	1
4-7	•Screw, Fillister Head 1/4-20 X 3/8"	32035511	5
4-8	•Washer, Belleville - 1/4"	32217382	5
4-9	•Retainer, Finger Valve	32228306	5
4-10	•Valve, Finger	30220115	5
4-11	•Plate, Seat - Low Pressure	32228355	1

All manufacturer's names, numbers, photos, product description and/or part numbers are used for reference purposes only & it is not implied that any part listed is the product of these manufacturers. Since Approvement are made from time to time, the illustration and specifications are subject to change without notice.