

2. Bare Compressor - Model 2540

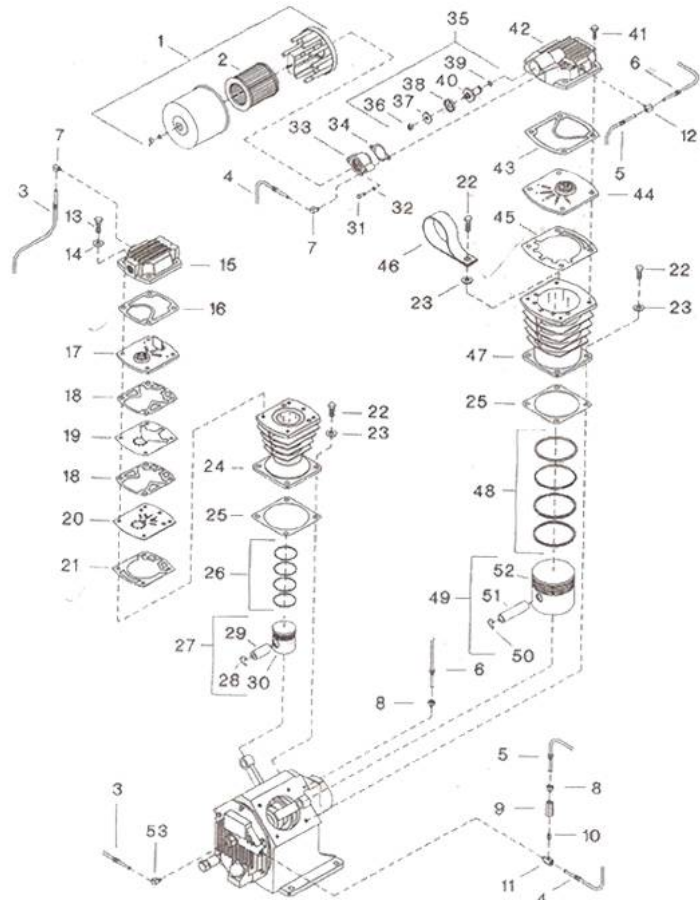


FIGURE 2. MODEL 2540 BARE COMPRESSOR

All manufacturer's names, numbers, photos, product description and/or part numbers are used for reference purposes only & it is not implied that any part listed is the product of these manufacturers. Since Approvement are made from time to time, the illustration and specifications are subject to change without notice.

2. Bare Compressor - Model 2540

Figure 2. Model 2540 Bare Compressor			
Ref. No.	Part No.	Description	Units Per Assy.
2-1	Filter Air Inlet Complete	32230542	1
2-2	•Element Filter 10 Micron	32012957	1
2-3	Tube Assembly Pilot Valve/High Pressure Head	32188393	1
2-4	Tube Assembly Frame End Cover Tee/Inlet	32201444	1
2-5	Tube Assembly Fec Check Valve/Lp Airhead	32201451	1
2-6	Tube Assembly Breather	32188633	1
2-7	Elbow, Tube 5/16 X 1/8"	95C31860	2
2-8	Connector, Tube 5/16 X 1/8"	95082483	2
2-9	Valve, Check	32001141	1
2-10	Nipple, Close - 1/8 X 3/4	95796017	1
2-11	Connector Male 5/16 X 1/4"	32203242	1
2-12	Tee Male Branch 5/16 X 1/8"	95007522	1
2-13	Capscrew Hex 1/2 - 13x2"	95104196	4
2-14	Washer, Flat-1/2"	32060006	4
2-15	Airhead, 2nd Stage High Pressure	32175754	1
2-16	Gasket, Airhead, 2nd Stage, High Pressure	32252777	1
2-17	Assembly, Valve-High Pressure (See Fig 4, Pg. 8)	32229817	1
2-18	Gasket, Spacerplate - High Pressure	32252793	2
2-19	Plate, Spacer - High Pressure	32229791	1
2-20	Plate, Disc - High Pressure	32229783	1
2-21	Gasket, Valve Plate - High Pressure	32252785	1
2-22	Capscrew - Hex 1/2-13 X 1-1/4"	95053567	8
2-23	Gasket, Copperwasher - 1/2"	95674701	8
2-24	Cylinder, Air 2-3/4" - 2nd Stage	32177172	1
2-25	Gasket, Flange	30294201	2
2-26	Set Ring 2-3/4"	32198335	1
2-27	Piston, Air 2-3/4" 2nd Stage Complete	32204950	1
2-28	•Ring Lock	30287791	2
2-29	•Pin Piston	32182818	1
2-30	•Piston Air 2-3/4"	NSS	1
2-31	Capscrew-Hex 5/16-18 X 1-3/4"	95079927	2
2-32	Lockwasher Spring -5/16"	95043188	2
2-33	Cover, Unloader 1-1/4" Npt	32230633	1
2-34	Gasket, Unloader Cover	32182829	1
2-35	Assembly, Piston Unloader	32229833	1
2-36	•Locknut - 1/2-20	32229684	1
2-37	•Plate, Washer Retaining	32229478	1
2-38	•Seal, Unloader Piston	32172629	1
2-39	•O-Ring, Unloader Piston	32188385	1
2-40	•Piston, Unloader	NSS	1
2-41	Capscrew Hex 1/2-13 X 1-3/4"	95104170	4
2-42	Airhead, 1st Stage - Low Pressure	32198533	1
2-43	Gasket, Airhead, 1st Stage - Low Pressure	32175663	1
2-44	Assembly, Valve-Low Pressure (See Fig.5)	32228389	1
2-45	Gasket, Valve Plate - Low Pressure	32233850	1
2-46	Strap, Lifting	NSS	1
2-47	Cylinder, Air 5" 1st Stage	32177669	1
2-48	Set, Ring 5"	32198376	1
2-49	Piston, Air 5" 1st Stage - Complete	30287825	1
2-50	•Ring Lock	30287791	2
2-51	•Pin Piston	30297022	1
2-52	•Piston, Air 5"	NSS	1
2-53	•Elbow, Tube 5/16 X 1/4"	95110441	1

All manufacturer's names, numbers, photos, product description and/or part numbers are used for reference purposes only & it is not implied that any part listed is the product of these manufacturers. Since Approvement are made from time to time, the illustration and specifications are subject to change without notice.