

## 4. LOW PRESSURE CONCENTRIC RING VALVE - 10T3NLM

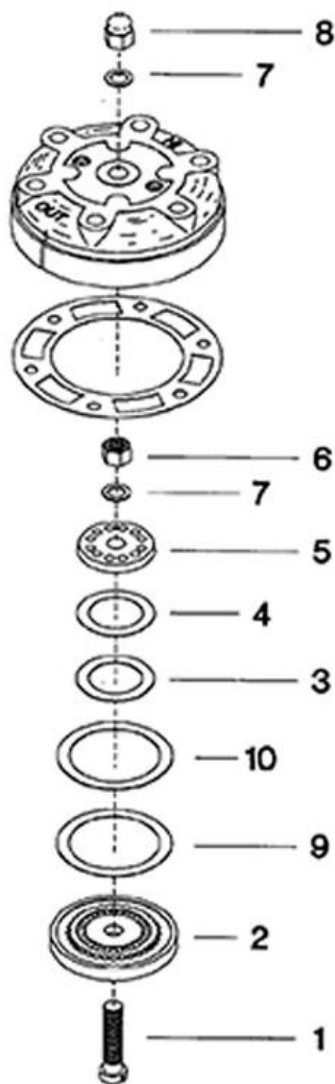


FIGURE 4. LOW PRESSURE CONCENTRIC RING VALVE

## 4.LOW PRESSURE CONCENTRIC RING VALVE - 10T3NLM

| <b>FIGURE 4. LOW PRESSURE CONCENTRIC RING VALVE</b> |                 |                            |                        |
|---|-----------------|----------------------------|------------------------|
| <b>Ref. No.</b>                                     | <b>Part No.</b> | <b>Description</b>         | <b>Units Per Assy.</b> |
| REF.  | 37004843        | Valve, 50 - Complete       | 2                      |
| 4-1   | 30279897        | • Bolt, Valve              | 1                      |
| 4-2   | 30229538        | • Seat, Valve - Discharge  | 1                      |
| 4-3   | 30181499        | • Plate, Valve - Discharge | 1                      |
| 4-4   | 30221501        | • Spring, Valve            | 1                      |
| 4-5   | 30218978        | • Plate, Stop              | 1                      |
| 4-6   | 95076816        | • Nut, Hex                 | 1                      |
| 4-7   | 37092897        | • Washer, Belleville       | 2                      |
| 4-8   | 30287650        | • Nut, Acorn               | 1                      |
| 4-9   | 30221550        | • Spring, Valve - Inlet    | 1                      |
| 4-10  | 30215891        | • Plate, Valve - Inlet     | 1                      |

All manufacturer's names, numbers, photos, product description and/or part numbers are used for reference purposes only & it is not implied that any part listed is the product of these manufacturers. Since improvement are made from time to time, the illustration and specifications are subject to change without notice.